



## What is your BI Maturity?

While some organizations have been running marathons for years, others are walking briskly and yet others are just learning to crawl. We can help you understand your maturity and what it means for your organization. Most importantly, we can help you advance more quickly while choosing smoother paths away from the rocky roads.

### YOU KNOW YOUR BUSINESS. YOU UNDERSTAND IT.

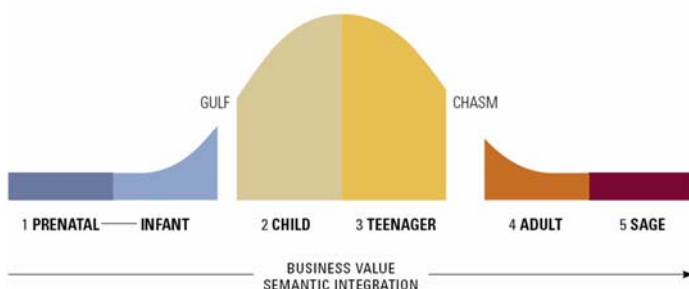
And, you probably even understand how to make it work best for your organization. However, the effort required to assess your BI Maturity - not to mention the requisite skill and experience - may stretch the resources of your already over-worked team.

### WE UNDERSTAND BUSINESS INTELLIGENCE.

This is where we come in. We understand the problems. We know the tools. We know where the pitfalls lay. More importantly, we know how to help you assess your BI Maturity. Together, we can deliver business value through BI solutions appropriate to your situation.

Our approach combines our knowledge of Business Intelligence including the problems, approaches, tools and solutions. We recommend starting with a **BI Assessment**, which enables you to plan solutions that are appropriate to your organization's capabilities as well as improve your team's ability to support the business.

TDWI's BI Maturity Model—User Adoption Curve



### UNDERSTAND THEN PLAN.

Our methodology, wielded by very senior BI Architects over the course of many years, is the tool we use to provide you with a view of your organization's abilities along the following dimensions:

1. **Scope.** To what extent does your BI program support all parts of the organization and all potential users?
2. **Sponsorship.** To what degree are your BI sponsors engaged and committed to the program?
3. **Funding.** How successful is your BI team in securing funding to meet business requirements?
4. **Value.** How effectively does your BI meet business needs and expectations?
5. **Architecture.** How advanced is your BI architecture, and to what degree do your groups adhere to architectural standards?
6. **Data.** To what degree does the data provided by your BI environment meet business requirements?
7. **Development.** How effective is your BI team's approach to managing projects and developing solutions?
8. **Delivery.** How aligned are your reporting and analysis capabilities with user requirements and what is the extent of usage?

## DEVELOPING YOUR BI ROADMAP

We will work with you to collect and organize the data on your organization's BI demand and capabilities. We combine this information with insights from past surveys to develop an initial BI Roadmap. This provides you with a framework you can use to make more informed and successful investments in BI. By doing so you may avoid (as TDWI points out) "[rolling] out a BI program in an initial wave of enthusiasm and excitement, only to see it get bogged down by cultural, organizational, and technical challenges."

## DELIVERING THE RIGHT SOLUTION

Once you are informed and prepared to act, our BI Architects and Technologists can help you implement solutions appropriate to your infrastructure and appropriate to your level of BI Maturity. We have the skills and experience to help you:

- Exploit your data assets
- Enhance decision-making through fact-based, KPI-driven Dashboards
- Speed operational issue resolution through data drilling
- Exploit business opportunities through quicker decision-making
- Enhance organizational effectiveness – hinge performance on results, enable metric-based communication
- Make better-informed decisions

## BUSINESS INTELLIGENCE with BUSINESS OBJECTS

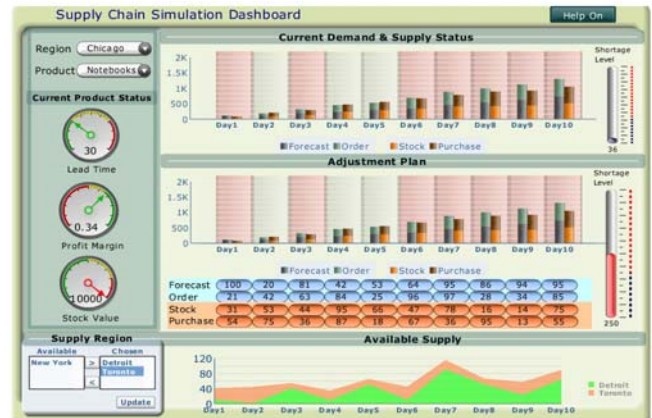
Whether you are creating new reports or deploying scorecards, Business Objects should be your tool of choice. Its wide range of options allows you to extend your capabilities by building on your past investments.

The following examples of dashboards were built with Business Objects products, each one capable of sharing definitions, data sources and security models. These are just a couple of examples of what is possible when the right capabilities are applied to your needs.

Call us today to schedule your BI Assessment.

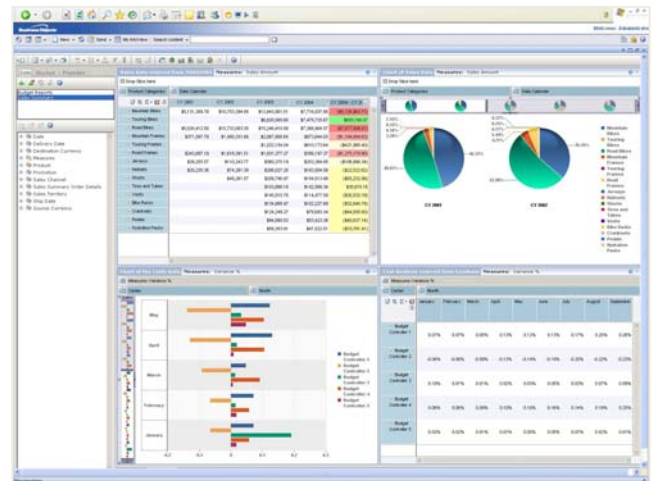
## CRYSTAL XCELSIUS

Unparalleled at extending your understanding of your data, Crystal Xcelsius empowers your team with easy-to-use what-if analysis of your business data and compelling visualizations.



## VOYAGER

Insight-driven organizations effectively manage their goals and collaboratively track their progress using Voyager's OLAP standard interface. Designed for business analysts, Voyager provides a comprehensive range of business and time calculations, allowing you to share analysis beyond your analysis team.



**Mark Montanaro**  
Director  
Business Development  
[mark@chatsoft.com](mailto:mark@chatsoft.com)  
203-222-7118 x112